

SIGMA FOUNDATION FOR NURSING

# Newsletter

## You make this possible!

Over the last few years, many of you became Sigma Foundation for Nursing donors to help nurses around the world heal, lead, and learn through the Vision 2020 Campaign. Last June, the US \$4 million campaign goal was achieved thanks to bequests, your donations, and the volunteer leadership of the Foundation board, committee members and other volunteers, and Sigma board members.

The Vision 2020 Campaign was fully implemented during the 2011-2013 biennium and concluded halfway through the 2017-2019 campaign. During that time there has been a 67% increase in the number of Foundation donors giving to the Future, Leadership, Research, and sustaining funds. Thank you!

In just a couple of years, Sigma will begin celebrating its 100th anniversary. The Foundation wants to join you in making sure that there will continue to be increased grant funding for nursing research, evidence-based practice, and leadership; membership subsidies for future inductees; and new Sigma program support for all generations of nurses around the world for the next 100 years. Watch for details later this year. Remember, these are only possible because of your Foundation donations. Thank you again for joining the Foundation to support all generations of nurses.

Gratefully,



**Lynn Lambuth**  
Sigma Foundation for Nursing  
Chief Administrative Officer



*Pictured left to right: Foundation CAO Lynn Lambuth with 2011-13 Foundation Board Chair and 2017-19 Sigma VP Juli Maxworthy and 2017-19 Foundation Board Chair Patrick Palmieri.*

## **FUTURE**

*Donations to the 21st Century Permanent Fund support emerging Sigma initiatives.*

### ***You've increased program support to Sigma by 65%!***

Your donations to the Foundation's Future Permanent Fund provided a 65% increase in program support to Sigma. Those funds helped make possible the Global Advisory Panel on the Future of Nursing and Midwifery that engaged nurses and midwives around the world.

Your donations also supplemented the Johnson & Johnson Global Community Impact grants to the Maternal-Child Health Nurse Leadership Academy (MCHNLA) Africa, which is improving health outcomes for thousands and thousands of mothers and babies in five African countries.

The Tau Lambda at-Large Chapter — in collaboration with AfrIPEN, WHO-FIC Africa Region and Amref International University — will host the 2018-19 MCHNLA Africa poster presentation and cohort graduation at the 2nd Interprofessional Education & Collaborative Practice for Africa Conference on 30 July – 2 August 2019 in Nairobi, Kenya, Africa.



MCHNLA Africa participants at the second workshop in April 2019.

*From left to right: Ursala Kors, Mariana Scheppers, Carin Maree, Wanda van der Merwe, Klarissa Troskie, and Seipati Padi.*

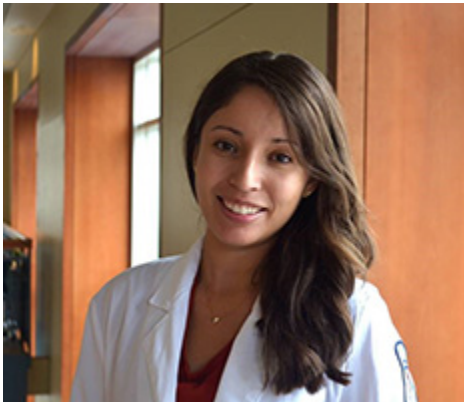
## LEADERSHIP

*Donations to the Leadership Fund provide leadership education grants and membership subsidies.*

### ***You've increased leadership education grants and membership subsidies by 60%!***

Your donations to the Foundation's Leadership Fund resulted in a 60% increase in leadership education grants and membership subsidies to more than 1,000 nurses and new Sigma inductees around the world.

Most recently, we received more than 100 leadership education grant applications to attend the upcoming Sigma International Nursing Research Congress in Calgary, Alberta, Canada, and we are funding 20 members from five global regions. Most of the recipients are presenting research at their first international conference.



*Nu Beta at-Large Chapter member Rebekka Lerma.*

Rebekka was able to be inducted into Sigma's Nu Beta at-Large Chapter after receiving an Edith Anderson Membership Subsidy from the Sigma Foundation for Nursing's Leadership Fund.

## RESEARCH

*Donations to the Research Permanent Fund provide small and collaborative research grants.*

### ***You are increasing research grant funding!***

Your donations to the Foundation's Research Permanent Fund have increased research grant funding by 40%, providing more grants to nurses who are improving the health of the world's people.

Small grants that will be funded next month are going to researchers in four global regions addressing a variety of health issues from diabetes to oncology. Also, we are presenting our first collaborative research grant with the National Association of Hispanic Nurses later this year.



*From left to right: Sigma President Beth Baldwin Tigges, 2019 Sigma Small Grant recipient Rehema Mligo, and Sigma Chief Executive Officer Elizabeth Madigan.*

Rehema Mligo (Tanzania) received a 2019 Sigma Small Grant for her study to implement a patient-centered pressure injury prevention care bundle to improve patient outcomes.



Together, we can make a difference  
in healthcare around the world.

Be counted as an International Nurses Day Donor.

Donate

[Make more of these opportunities available for nurses.](#)

[Donate Today »](#)

**Get social!**



Distributed by [Sigma Theta Tau International Honor Society of Nursing](#). ©2019